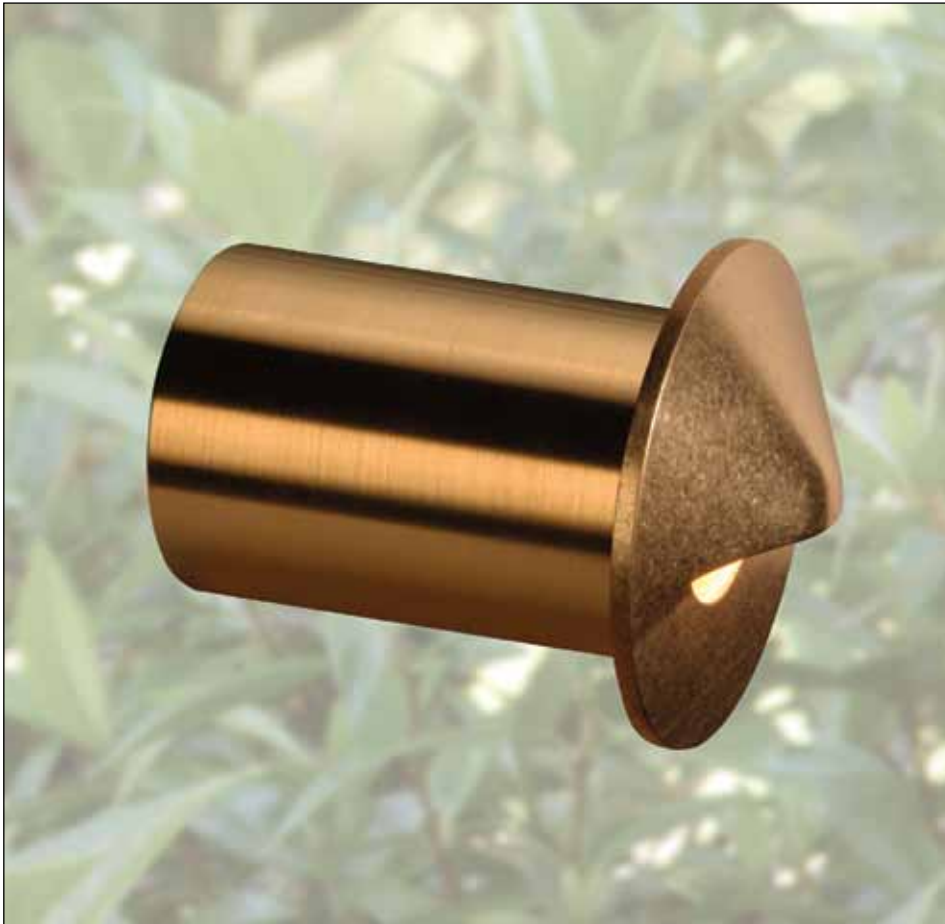


FX | LUMINAIRE®  
CG-20



CUSTODEGRADINO® | FX LUMINAIRE®

ORGANIC SHAPE,  
ENGINEERED QUALITY

The FX Luminaire® halogen lamp CustodeGradino® was developed to fill the need for an unobtrusive specification grade wall light that would introduce glare-free illumination onto safety and circulation areas.

This patent pending 12v unit is a perfect choice for high traffic public areas or walls near people-water such as resort applications. An innovative adjustable lamp mount allows the installer to fine tune beam projection to suit any need.

Solid brass and composite construction make this model a lasting value. Its deep cowl and recessed lamp position allows pedestrians to view uphill without dangerous glare. Obviously, glare-free illumination should be the primary function of any fixture that is designed to provide safe passage through foot traffic hazards.

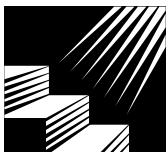


TIMELESS BEAUTY

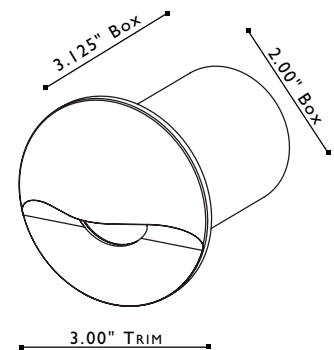
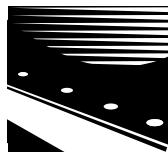
*Brass and copper have been used for a thousand years in nautical applications. Naval architects understood and explained the high strength and natural corrosion resistance of these semi-precious metals. The garden environment is as tough and caustic as any found in the high seas.*

*The copper will patina naturally over time and can be accelerated with solution spray. For patina formulas visit our website at [www.FXL.com/patina](http://www.FXL.com/patina)*

STAIRWAY  
LIGHTING



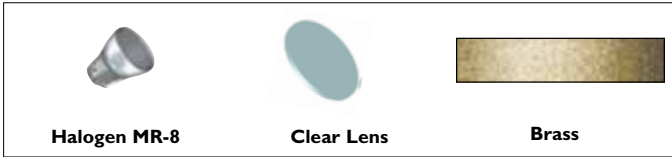
PERIMETER  
LIGHTING



# CUSTODEGRADINO® – ORDERING INFORMATION

The CG comes standard with a 20 watt Halogen MR-8 lamp, Clear Lens, and the faceplate in Brass (BS).

## STANDARD PARTS:



Halogen MR-8

Clear Lens

Brass

## STANDARD OPTIONS:

1 + 2 + 3 ORDERED TOGETHER ON SAME LINE

## AVAILABLE LAMP CONFIGURATIONS:

Choose from any watt Halogen (H).

FIXTURE/CODE      WATTAGE/CODE      AVG. LIFE HOUR

1	CG	2	HALOGEN (H) LAMP OPTIONS:
		20H	20 watt Halogen, wide 42° beam Avg. life 2000 hours
		20H-N	20 watt Halogen, narrow 10° beam Avg. life 2000 hours

## STANDARD FINISH OPTIONS:

Brass is standard. All other choices must be specified.

CODE	DESCRIPTION
BS	Brass (will naturally patina)

## NON-STOCKING FINISH OPTIONS:

Allow extra time for the following finish options:

3	CODE	DESCRIPTION
	BZ	Bronze Metallic
	DG	Desert Granite
	BF	Black Wrinkle
	VF	Verde Speckle
	SB	Sedona Brown
	WF	White Wrinkle
	WI	Weathered Iron
	NP	Nickel Plate

## ADDITIONAL LENS OPTIONS:

Comes pre-assembled with a clear lens.

All other lens options will arrive in separate box.

CODE	DESCRIPTION	
B	S	Spread Lens

## ORDERING SAMPLE:

SECTIONS:	DESCRIPTION:	WHAT TO ORDER:
1 + 2 + 3 <small>optional</small>	+  +	= CG-20

## PHOTOMETRICS:

Spacing for minimum footcandle illumination on level ground.  
 Note: 1fc for commercial projects  
 .3fc for residential projects

CG-20 5' for 1fc, 8' for .3fc

Distance from Center	CG-20
2'	14
4'	2.5
6'	.93
8'	.53
10'	.38
12'	.10

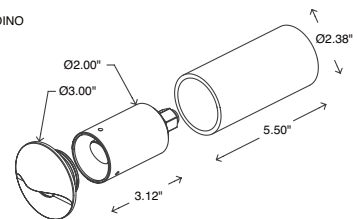
For conversion to lumens: Multiply footcandles x 10. See FX glossary for a full description of fc and lumens.

## WALL MOUNT INSTALL DETAIL:

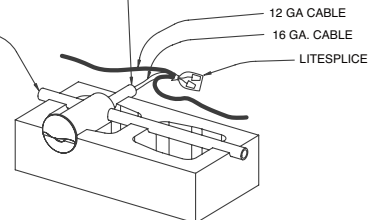
INSTALL FX LUMINAIRE CUSTODE GRADINO AS SHOWN USING 16 GAUGE CABLE AND PROVIDED WIRE NUTS. PLASTIC 2" DIA. EMT TUBING CAN BE DRILLED FOR 1/2 CONDUIT TUBING USING A 7/8" HOLE SAW.

FX LUMINAIRE CUSTODE GRADINO FIXTURE INCORPORATES A REMOVABLE CAP FOR LAMP REPLACEMENT, AND SOLID BRASS BODY THAT SLIDES INSIDE A 2" DIA. PLASTIC EMT SLEEVE (NOT SUPPLIED WITH THIS PRODUCT) USED FOR PRE-INSTALLATION ALIGNMENT. THIS INSTALLATION MAKES ADJUSTMENTS TO THE WALL A PERFECT MATCH.

BLUE OR GRAY EMT CONDUIT WITH STRANDED THHN WIRE SIZED TO MATCH WATTAGE LOAD.



WATERPROOF SLEEVE END TO PREVENT WATER FROM SEEPING THROUGH THE WALL AND INTO THE LAMP HOUSING.



THIS FIXTURE IS DESIGNED FOR DOWN LIGHTING ONLY. DO NOT USE IN UP LIGHT POSITION